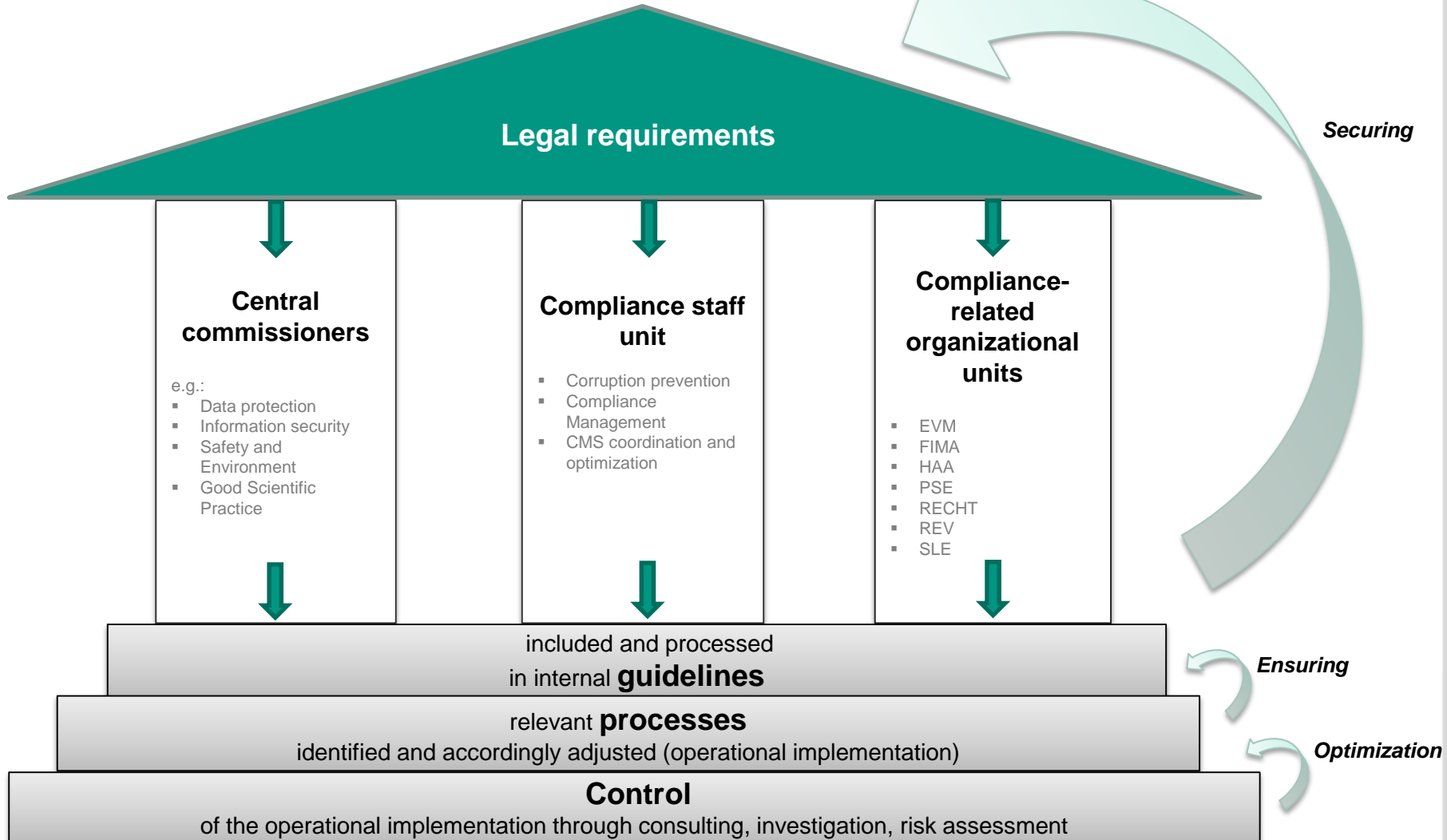
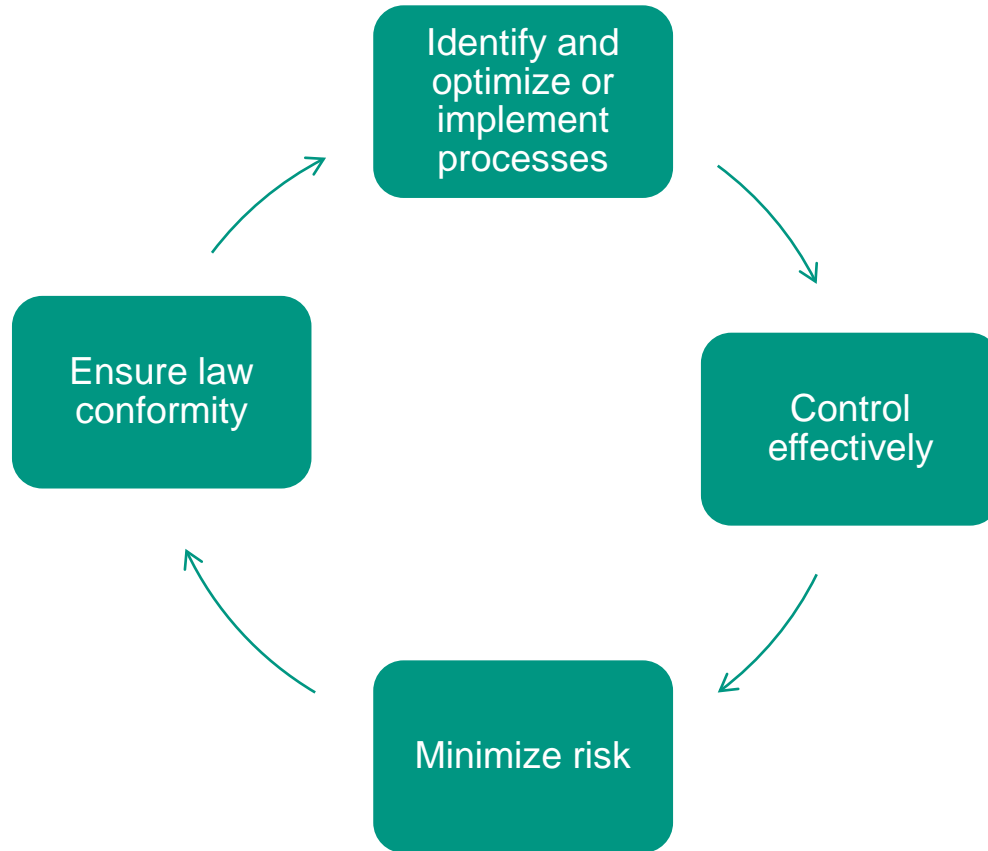


# House of Compliance

(Compliance = Law conformity)

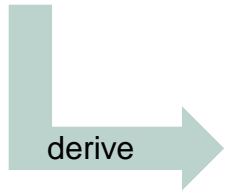


# Procedure



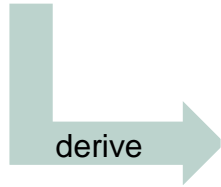
**Legal requirements**

- Constitution
- Statute/Act
- Regulation



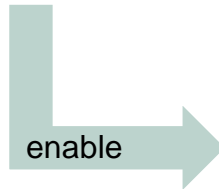
**Internal Guidelines**

- Internally binding rules in accordance to legal requirements



**Processes**

- Identification of relevant processes
- Modification of existing processes
- Introduction of new processes



**Control**

- Consulting and sensitization
- Risk assessment
- Investigations

